

Description of Alternative Brake Pad curing ovens

1- Gas heated multi-zone conveyor oven :

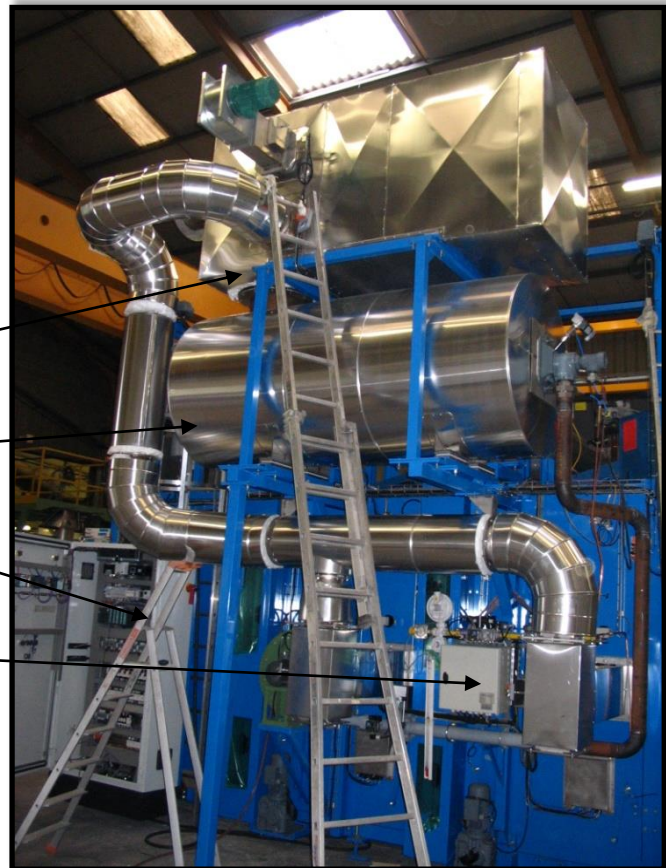
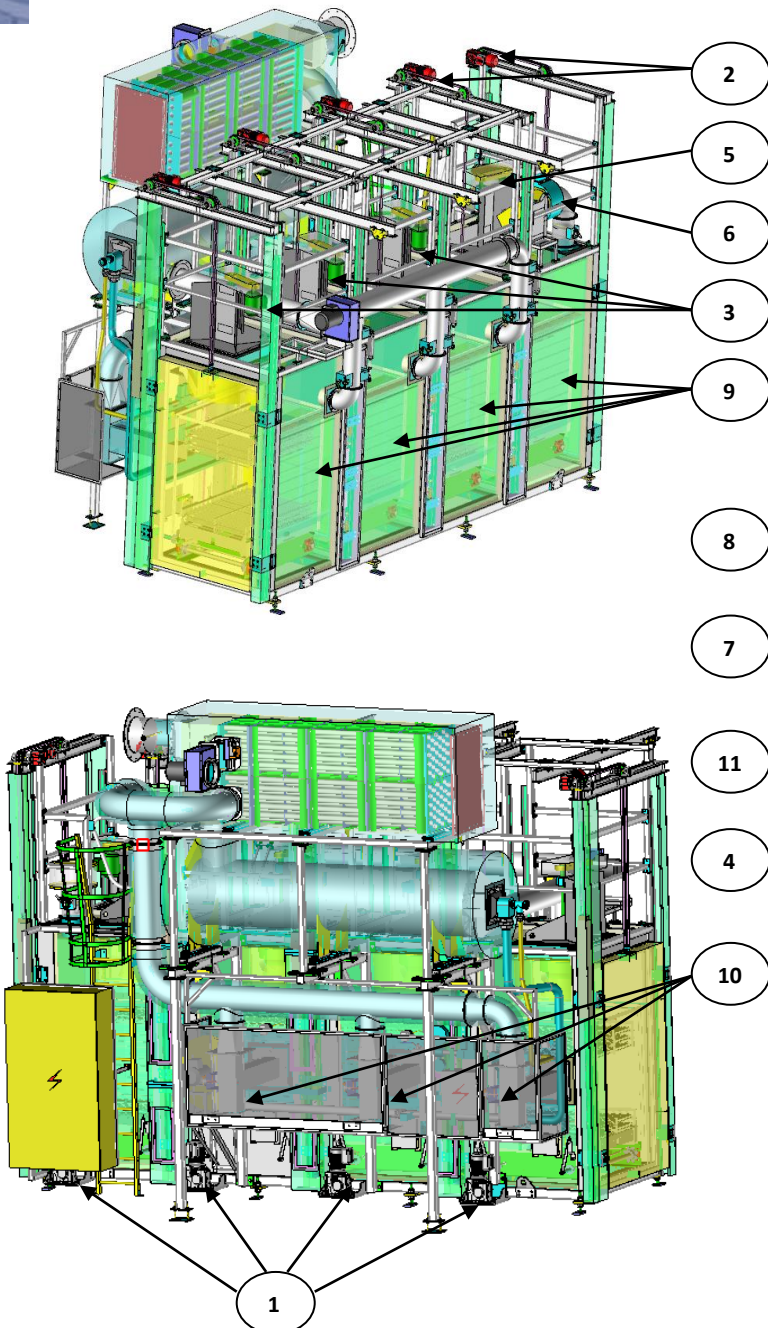
This type of tower includes but is not limited to:

- Four motorized chain conveyors (1) to carry the tray through the oven
- Five vertical doors (2) to close hermetically each zone
- Three recirculation fans (3)
- A natural gas burner with pipe train (4)
- two cooling fans, one blowing (5) and one exhaust fan (6)
- An afterburner (7) to burn exhaust gases
- An heat exchanger (8) to collect energy from the fumes
- Transversal and adjustable air diffusers (9)
- Three T-shaped dampers (10) to modulate temperature in heating zones
- An electrical cabinet (11) with a tactile control panel, PLC

Conveying

Thermal

Miscellaneous



Technical specifications of this example:

Curing of brake pads at 480°F with a multi-zone gas heated oven at a rate of 300 pads per hour

2- Gas heated curing tower

This type of tower includes but is not limited to:

- A revolving arm (1) to bring the products
- A loading/unloading (2) station supplied by robot or manual
- A 120° rotating table (3) to transfer from loading station to tower base
- Two elevators (4) to stack trays
- An up (5) and down(6) column of trays
- A transfer system (7) to move trays from the up to the down column
- Two catching systems (8) which support the stack of trays
- Two recirculation fans (9)
- A natural gas burner with pipe train (10)
- Two exhaust fans (11)
- An afterburner (12) to burn exhaust gases
- Transversal and adjustable air diffusers (13)
- Two access doors for maintenance
- A maintenance platform (14)

An electrical cabinet (15) with a tactile control panel, PLC

Handling system

Thermal

Miscellaneous

Technical specifications of this example:
Curing of brake pads at 570 °F at a rate of 660 pads per hour

